

922 Series Handheld Sign Retroreflectometer



Reliable and field-proven, the 922 platform delivers a simple, economical solution for improving and maintaining roadway safety by providing a zero error means of assessing reflectivity data and inventory management control.

The included software allows for data management in Excel spreadsheets and Google Maps, or just as easily uploads into GIS software via built-in Bluetooth. A built-in barcode reader, along with GPS, makes adding retroreflectivity readings to existing inventory management systems easy -- with many GIS systems recognizing the 922 firmware right out of the box.

Reliability in a Field-Proven Platform

Safe Workers & Motorists

- Exclusive annular detector aperture, provides accurate, instant measurement from all directions in a single reading
- Reduces a worker's time in-roadway, while offering a zero-error method of meeting minimum retroreflectivity requirements, such as US MUTCD

Simple Setup & Use

- Automatically records 10 precise data points with the squeeze of the trigger
- 7 additional user-defined data points visible on the color touch screen & transferable to Excel, Google and GIS software

Robust, Reliable and Field-Proven

- Ruggedized light source, annular optics, GPS, barcode reader & commercial-grade rechargeable battery
- Housed in a compact, field-proven and lightweight casing, with over 1000 units in the field

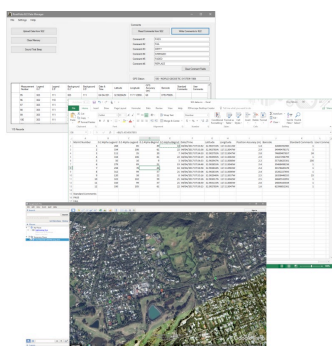


922 Series Handheld Sign Retroreflectometer



USER-FRIENDLY OPERATION

Full color touchscreen



COMPREHENSIVE DATA

17 crucial data points



PROVEN DURABILITY

1000's of units in the field



ULTRA ACCURATE OPTICS

Omni-directional measurements

Geometry

Model	922	922D
Applicable Standards	ASTM E1709 ASTM E2540 AS/NZS 1906.1	EN 12899-1 DIN 67520
Entrance Angle:	-4°	+5°
Observation Angle:	0.2° and 0.5°	0.33°
Light Source angular aperture	0.1°	0.1°
Receiver angular aperture (annular)	0.1°	0.1°
Field of Measurement	1 inch (25 mm) diameter spot	1 inch (25 mm) diameter spot

General Specifications

Detector Responsivity	Photopic response in accordance with ASTM E1709 paragraph 6.4.2 and ASTM E2540 paragraph 6.4.2
Range (cd/lx/m ²)	0-2000
Data Memory	5600 measurements (enough for 2-3 months of normal use)
Computer Interface	USB and Bluetooth
GPS	12-Channel WAAS Enabled for <3 meter position fix uncertainty
Barcode Reader	Programmable Symbolologies Laser Scanner
Power Supply	Removable 12 VDC, 2.4 Ah battery (DeWalt P/N DC9071)
Charger	100-240 VAC, 50/60 Hz (add -1 to model no.) 12 VDC cigarette lighter (add -2 to model no.)
Operating Temperature	0° to 50° C (32° to 122° F)
Operating Humidity	0 to 95% non-condensing
Dimensions	11.5-in (290 mm) L x 4.5-in (115 mm) W x 12.75-in (325mm) H including battery
Weight	5.9 lbs (2.7 kg) with battery

Performance

- Measures beaded and prismatic type signs
- Any sign material color without adjustments or filters
- Dual observation angles of 0.2° and 0.5° (or 0.33°) simultaneously, for current and future needs
- Auto-averaging of legend and background separately for installed signs and MUTCD compliance
- Measurements are omnidirectional, reducing the number of measurements required for accurate analysis
- Reads & records barcodes for simplified inventory management
- Determines and records global positioning (GPS) for clear location and mapping
- Communicates with other devices via Bluetooth for use with Trimble and other GPS Systems
- Full color display with high-visibility touch screen
- Full-day operation with two rechargeable, 12-volt batteries
- Included lightweight, ergonomic, durable protective case
- Meets ASTM, CIE, CEN & DIN specifications

