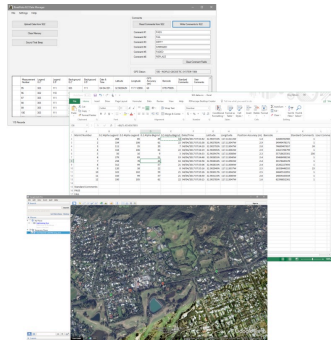


922 Series Handheld Sign Retroreflectometer



USER-FRIENDLY OPERATION
Full color touchscreen



COMPREHENSIVE DATA
17 crucial data points



PROVEN DURABILITY
1000's of units in the field



ULTRA ACCURATE OPTICS
Omni-directional measurements

Geometry

Model	922	922D
Applicable Standards	ASTM E1709 ASTM E2540 AS/NZS 1906.1	EN 12899-1 DIN 67520
Entrance Angle:	-4°	+5°
Observation Angle:	0.2° and 0.5°	0.33°
Light Source angular aperture	0.1°	0.1°
Receiver angular aperture (annular)	0.1°	0.1°
Field of Measurement	1 inch (25 mm) diameter spot	1 inch (25 mm) diameter spot

General Specifications

Detector Responsivity	Photopic response in accordance with ASTM E1709 paragraph 6.4.2 and ASTM E2540 paragraph 6.4.2
Range (cd/lx/m ²)	0-2000
Data Memory	5600 measurements (enough for 2-3 months of normal use)
Computer Interface	USB and Bluetooth
GPS	12-Channel WAAS Enabled for <3 meter position fix uncertainty
Barcode Reader	Programmable Symbolologies Laser Scanner
Power Supply	Removable 12 VDC, 2.4 Ah battery (DeWalt P/N DC9071)
Charger	100-240 VAC, 50/60 Hz (add -1 to model no.) 12 VDC cigarette lighter (add -2 to model no.)
Operating Temperature	0° to 50° C (32° to 122° F)
Operating Humidity	0 to 95% non-condensing
Dimensions	11.5-in (290 mm) L x 4.5-in (115 mm) W x 12.75-in (325mm) H including battery
Weight	5.9 lbs (2.7 kg) with battery

Performance

- Measures beaded and prismatic type signs
- Any sign material color without adjustments or filters
- Dual observation angles of 0.2° and 0.5° (or 0.33°) simultaneously, for current and future needs
- Auto-averaging of legend and background separately for installed signs and MUTCD compliance
- Measurements are omnidirectional, reducing the number of measurements required for accurate analysis
- Reads & records barcodes for simplified inventory management
- Determines and records global positioning (GPS) for clear location and mapping
- Communicates with other devices via Bluetooth for use with Trimble and other GPS Systems
- Full color display with high-visibility touch screen
- Full-day operation with two rechargeable, 12-volt batteries
- Included lightweight, ergonomic, durable protective case
- Meets ASTM, CIE, CEN & DIN specifications

